

# 24 PAX CREW TRANSFER VESSEL DAMEN FCS 2710 SEAZIP 9



MV SeaZip 9 is a fast Twin Axe Bow catamaran for transport of Industrial Personnel, equipment and parts to offshore windfarms and oil & gas fields.

## GENERAL

Year of construction	2020
Hull Material	Aluminium
Superstructure material	Aluminium
Basic functions	Crew and cargo duties
Classification	Bureau Veritas
Flag	Dutch
IMO Number	9887865
Call sign	PGYL

## DIMENSIONS

Length overall:	26.8 m
Beam overall	10.5 m
Depth at sides	4.3 m
Draught max	2.3 m
Cargo deck area	90.0 m <sup>2</sup>
Gross tonnage	242
PAX capacity	Up to 24 PAX

## TANK CAPACITIES

Fuel oil	30.5 m <sup>3</sup>
Fresh water	3.5 m <sup>3</sup>
Sewage	0.5 m <sup>3</sup>
Bilge water / dirty oil	0.4 m <sup>3</sup>

## PERFORMANCES

Design speed	25 knots
Range at max. speed	1,200 nm

## PROPULSION SYSTEM

Main engines	2x Caterpillar C32 TTA
Total power	Up to 2,162 bkW
Gearboxes	2x Reintjes ZWVSA series (two-speed)
Propulsion	2x Fixed pitch propeller
Bow thrusters	2x 64 kW, hydraulically driven

## ELECTRICAL EQUIPMENT

Network	24V DC, 400/230V 50Hz AC
Generator sets	2x 38.0 ekW

## DECK LAY-OUT

Anchor equipment	1x 150 kg SHHP Pool TW, Chain, electric winch
Fendering	Heavy-duty bow fender, rubber "D" type at sides 1.5t/m
Maximum Deckload	
Moonpool	
Hoisting equipment	Foldable deck crane, up to 20 tm
Rescue zone	
Rescue cradle	
Fuel cargo system	

## SHIP SYSTEMS

Ship systems are according to Class	
Fuel transfer system	2x pump, electrically driven
Engine room ventilation	2x Extraction fan, 8,000 m <sup>3</sup> /hr each (one fan in each engine room)
Air-conditioning	Up to 110,000 BTU/hr
Fire extinguishing	Novac 1230 in engine rooms

## ACCOMMODATION

Bridge deck	Wheelhouse, crew mess
Main deck	Personnel area (VIP seats), crew cabins
	wet gear room, pantry, mess room, sanitary spaces
	Storage
Lower deck	Up to 8 berths
Accommodation	2* Single cabins
Cabins	3* Double cabins

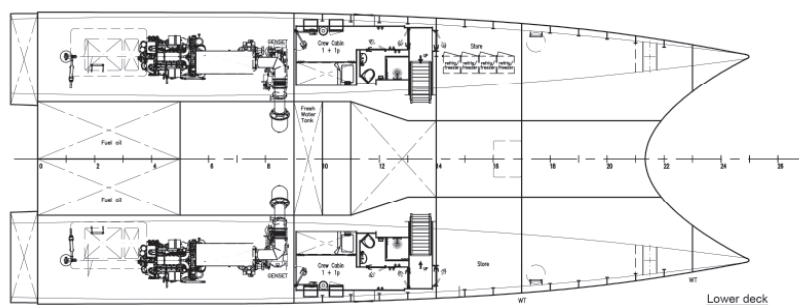
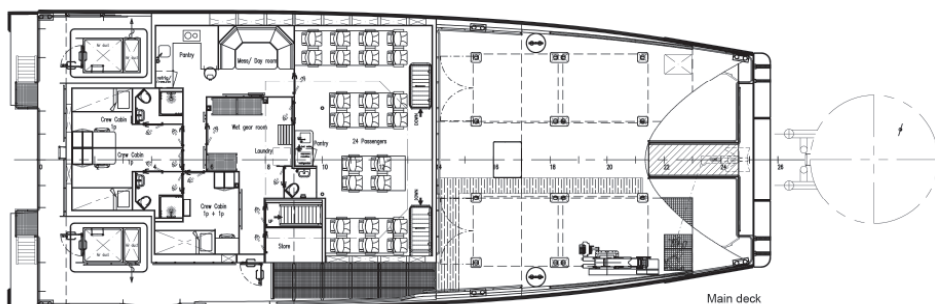
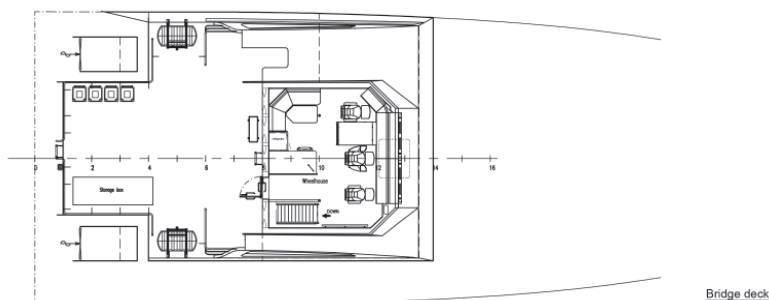
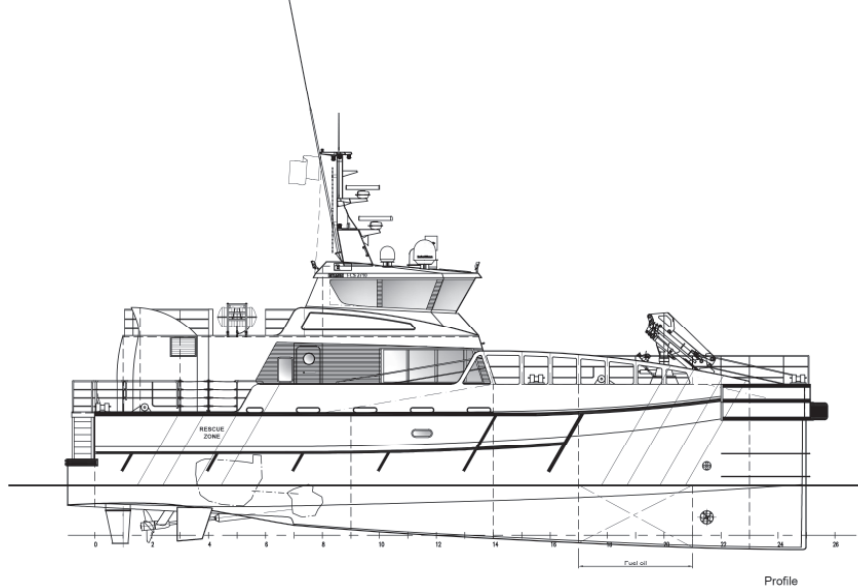


## NAUTICAL AND COMMUNICATION EQUIPMENT

Integrates navigation system  
Remote monitoring system (optional)  
Searchlight  
Radar (X-band)  
AIS  
Compass (Magnetic)  
Compass (GPS)  
Autopilot  
Echo Sounder  
Internal communications  
Weather system  
CCTV system  
Data communication

Ka-band V-SAT,  
4G, Wi-Fi system,  
LAN system

*Some of the items in this specification are optional. Specification and general arrangement can be changed without notice.*



lands,

company.

The shipping group operates a fleet of modern container feeders sailing under Dutch flag. JR Shipping cooperates closely with experienced maritime partners, several shipyards in the Netherlands and abroad, and renowned shipping bankers. JR Shipping is an efficient, flexible organisation, offering swift and effective solutions. We combine clout in ship development with a strong focus on safety in ship management and an eye for sustainability.

[www.jrshipping.com](http://www.jrshipping.com)

## ABOUT THE SHIP MANAGER

The management of SeaZip vessels is carried out by the JR Shipping Group in Harlingen, The Netherlands, an experienced and all-round shipping

**SEAZIP**  
OFFSHORE SERVICE

HIGH PERFORMANCE, SAFE OFFSHORE OPERATIONS



Korte Lijnbaan 25  
P.O. Box 3, 8860 AA Harlingen  
The Netherlands

T + 31(0)517 431 225  
[info@seazip.com](mailto:info@seazip.com)  
[www.seazip.com](http://www.seazip.com)