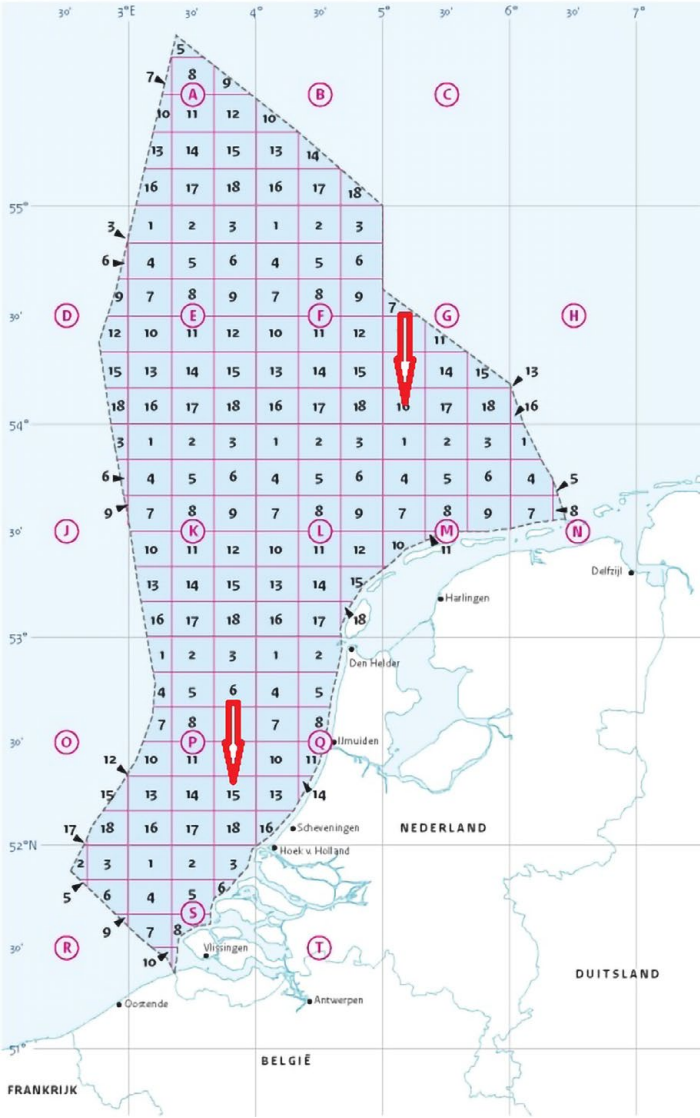


OPERABILITY

BLOKINDELING VAN HET NEDERLANDSE DEEL VAN
HET CONTINENTALE PLAT

ZONING NETHERLANDS CONTINENTAL SHELF



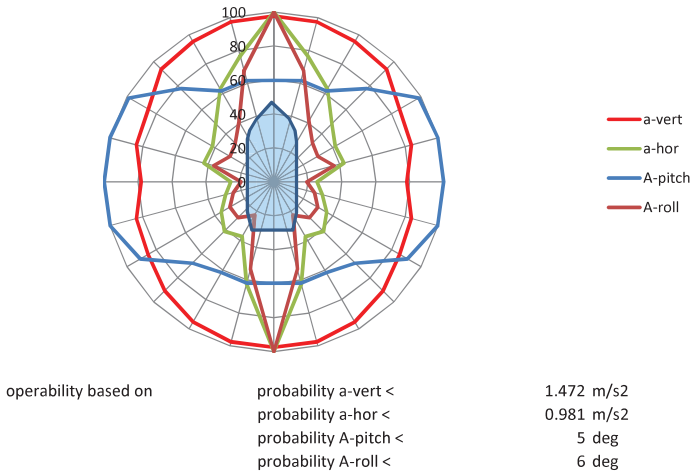
Geographical locations of the operability plots



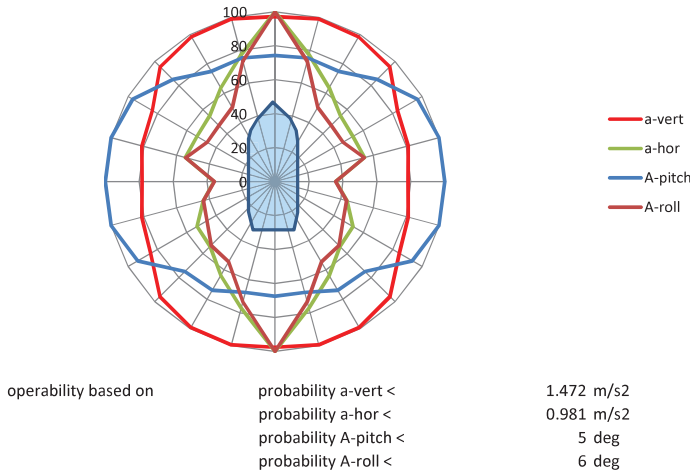
SeaZip Offshore Service BV
Korte Lijnbaan 25
P.O. Box 3, 8860 AA Harlingen
The Netherlands
T + 31(0)517 431 225

info@seazip.com, www.seazip.com

Location: G16 all wave heights



Location: P15 all wave heights



Coastwise, your partner in maritime logistics, is an internationally operating company. It offers services and knowledge to captain/ owners, shipping companies, brokers, charterers and other third parties. We are striving for long term relationships, based on traditional values. Coastwise wants to deliver quality and cost effective services with an open no-nonsense approach.



COS MASTER, COS MATE & COS MARINER
30 PAX MONOMARAN CREWTENDER



MV Cos Master, Cos Mate and Cos Mariner are monomaran class crewtenders, type Endurance 2727, built by Next Generation Shipyards. The design has competitive advantages such as more comfort, better seagoing characteristics and a high level of fuel efficiency due to its optimized hull form. It can accommodate up to 30 pax and has been optimized for safety. The wheel-house will provide total control and complete visibility during operations.

HULL

The Monomaran hull design consists of 3 hulls, a middle center hull and 2 side supporting hulls and a cross structure. It's design combines the advantages of a monohull (less roll) with the advantages of a catamaran hull (lower resistance, more stability and deadweight).

Compared to hulls of other fast crew tenders the advantages are:

- ▶ A higher speed compared to the same installed power;
- ▶ More efficient fuel consumption when operating at same speed;
- ▶ More comfort due less roll when operating in same sea conditions (less seasickness);
- ▶ Improved ability for operations in a significant wave height up to 2 mtr;
- ▶ Improved ability to keep its speed in higher sea conditions;
- ▶ Less risk for 'tunnel slamming';

The hull has been optimized by using CFD. Furthermore the design has been analyzed for motions and workability (Block G16 and P15 of the Netherlands North sea Continental Area) by Dutch Offshore Innovators and represented into polar graphics (P-plots).

GENERAL

Hull material	Aluminum
Superstructure	Aluminum
Classification	i Hull • Mach – Light Ship / - CTV (offshore service vessel)
Flag	Dutch

DIMENSIONS

Length overall	27,27 m
Length loadline	23,98 m
Breadth overall	9,80 m
Depth	4,85 m

Draft	1,80 m
Cargo deck area	67 m ²
Deck cargo	15 - 22 ton
Deck load	1,5 ton/m ²
Crew max.	5 persons
Industrial personnel	30 IP (MSC 418(97))

PROPULSION SYSTEM

The propulsion system consists of the Servogear Ecoflow Propulsor, offering an excellent solution between slow and fast speeds. The system is distinguished by robustness, low noise, low fuel consumption and high bollard pull.

Main engines	2 x MAN D2862 LE 489, 1066 kW @2100 rpm SCR – Add Blue IMO Tier III / EPA TIER 4
--------------	--

Propulsion	2 x Servogear HD295H, CPP
Bow thrusters	2 x

PERFORMANCES

Max. speed	27 knots
Range	1500 nm
Bollard Pull @ 100%	MCR 20 ton
Bollard Pull @ 80%	MCR 17 ton
Bollard Pull @ 47%	MCR 12 ton

TANK CAPACITIES

Fuel oil	40 m ³
Add blue	2 m ³
Fresh water	4,09 m ³
Sewage	2,40 m ³

STEPLESS DECK

- ▶ Transfer area and pax area on same deck level;
- ▶ Short routes towards transfer area;
- ▶ Multi-purpose deck layout for deck cargo;
- ▶ Dangerous good zone;
- ▶ Integrated moonpool with a diameter of 700 mm;
- ▶ Integrated Fuel cargo system;
- ▶ Deck crane.



SAFE TRANSFERS

For safe transfers the vessel is equipped with a Buoyant Works - Impact Bow Fender.
Reaction force <200kN by a vessel impact velocity of 0.5 m/sec for all displacements.

REDUCED HEIGHT STERN PLATFORM

- ▶ Easy access by low quays;
- ▶ Quick recovery by MOB;
- ▶ Diving operations.

MULTI-PURPOSE PAX AREA

Pax area can be configured in multiple lay-outs:

- ▶ 30 IP configuration;
- ▶ Conference configuration (optional);
- ▶ Survey configuration (optional);
- ▶ IP area equipped with coffee-bar, video-system, Wi-Fi.



WET GEAR ROOM

Outfitted with toilet, emergency shower, benches, clothing hooks and anti-slip floor.

DECK LAY-OUT

Anchor equipment 167 kg Pool anchor type TW, super high holding
Container(s) 1 x 20 ft in longitudinal direction, 15 ton total weight
or 1 x 20 ft abeam, 22 ton total weight
or 1 x 20 ft + 1x 10 ft, 10 ton total weight
or 2 x 10 ft, 15 ton total weight (side doors)
Foldable deck crane
Fuel cargo system

SURVEY LAY-OUT (OPTIONAL)

The vessel can be used for:

- ▶ Route surveys of pipelines, cables and renewables combined with crew transfer if required;
- ▶ Seabed mapping;
- ▶ Inspection survey;
- ▶ Services for dredging;

All in combination with crew/cargo transfers.

Due to the Servogear Ecoflow Propulsor the vessel can conduct survey duties in shallow waters on slow speed with high efficiency and low noise emissions.

THE VESSEL

- ▶ Optional: A-frame on the stern deck with an SWL of 1500kg, outreach ± 2 m to the aft- and 1 m to the forward direction from rotation point;
- ▶ Optional: vessel can be equipped with a hydraulic high speed tow winch;
- ▶ Is fitted with an integrated moonpool with a diameter of 700 mm;
- ▶ Can provide the following power(s): 24 V / 230 V.

ELECTRICAL EQUIPMENT

Network	24V dc, 3x 230V 50 Hz ac
Generator set	1 x

SHIP SYSTEMS

General service pump	1 x electrically driven
Fuel trim system	2 x 2800 l/hr @ 4 bar
Engine room ventilation	
Fire extinguishing	Hand operated fire extinguishers, fixed fifi system in engine room
	112.00 BTU/hr
Air conditioning	Main hull fixed, Side hull: Humphree, Active Ride Control
Interceptors	
CCTV	

NAUTICAL AND COMMUNICATION EQUIPMENT

Searchlight	2 x
Radar	2 x X-band
Electronic Charts	Dual Ecdis system
DGPS	1 x
AIS	1 x
Compass	1 x Magnetic , 1 x GPS
Autopilot	1 x
Echo sounder	1 x
Speed log	1 x Doppler log
Navtex	1 x
Internal communication	Intercom, Loudhaler, CCTV-system
External communication	GMDSS A2
Wheather system	1 x

COMMUNICATION

- ▶ Nearshore by Peplink 4/5G with dual maritime antenna setup for max. reach;
- ▶ Offshore by Satellite (optional);
- ▶ Internet acces with Cybersecurity.

All details preliminary and subject changes.

