

FAST CREW/CARGO CATAMARAN FCS 2610 SEAZIP 3



M.V. SeaZip 3 is a fast Twin Axe Bow catamaran for transport of personnel, equipment and parts to offshore windfarms, etc.

GENERAL

Hull	Aluminum catamaran
Superstructure	Aluminum
Basic functions	Crew / cargo duties
Classification	BV I \otimes HULL – MACH Light ship / Fast Utility Vessel sea area 3 - AUT-UMS
GMDSS	A2
IMO no	9758686
Call sign	PCTH
Year built	2015
Builder	Damen Shipyards
Homeport	Harlingen
Flag	Dutch

DIMENSIONS

Length o.a.	26.30 m
Beam o.a.	10.27 m
Depth at sides	2.90 m
Draught max.	2.20 m

TANK CAPACITIES

Fuel oil	14.20 m ³
Optional fuel oil	8.00 m ³ (trim tank)
Fresh water	2.00 m ³
Waste water	0.50 m ³
Bilge	0.33 m ³

PERFORMANCE (TRIALS)

Speed	25.0 kts
Max. range	Up to 1200 nm
Light ship weight	72.8 tons
GT	167 tons
NT	50 tons

PROPULSION SYSTEM

Main engines	2 x Caterpillar C32 TTA, rating B
Total power	2 x 895 kW (2400 bhp) 1800 - 2000 rpm
Gearboxes	Reintjes ZWVS 440/1 (two speed)
Propellers	Fixed-pitch propellers
Bow thrusters	2 x 50 kW

ELECTRICAL EQUIPMENT

Network	24 V d.c., 230V 50 Hz, 440 V 50 Hz
Generator set	2 x Caterpillar C2.2
Capacity	22.5 kW / 28.0 kVA
Shore connection	32 A

LIFE SAVING EQUIPMENT

Life buoys	2
Life jackets	16
Immersion suits	16
Personal MOB system	A GPS Plot self-managed Man Overboard Locating System is provided. The system contains a base unit and 14 alerting units. The alerting units will transmit on 121.5 MHz.
Liferafts	2 x 16 persons
Fire extinguisher	According to class

ACCOMMODATION

Crew	4
Cabins	3
Transfer crew	12
Wheelhouse	2 motion damping seats
Main deck	12 motion damping seats, crew cabins, pantry and toilet
Air conditioning	In the wheelhouse and the passenger accommodation

NAUTICAL AND COMMUNICATION EQUIPMENT

Searchlight	1 x Pesch 1000W 230V
VHF's	1 x Sailor RT 6222 1 x Sailor RT 6210
Radar	2 x JRC JMA 5212-4 MK2
GPS	JRC JRL-20
Navtex	JRC NCR 333
AIS	JRC JHS 182
MF/HF	Sailor 5000
Immersat C	Sailor TT 3000E
VSAT antenna system	Intellian V60 Ku-band marine communication
Wi/Fi/Fleet broadband	Sailor 250
Ecdis	2 x Transas Navisailor 4000

Some of the items in this specification are optional. Specification and general arrangement can be changed without notice.



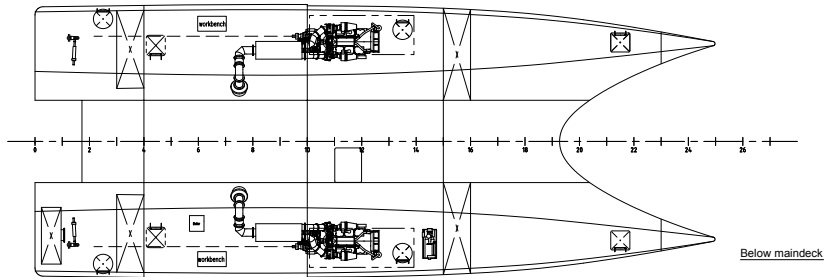
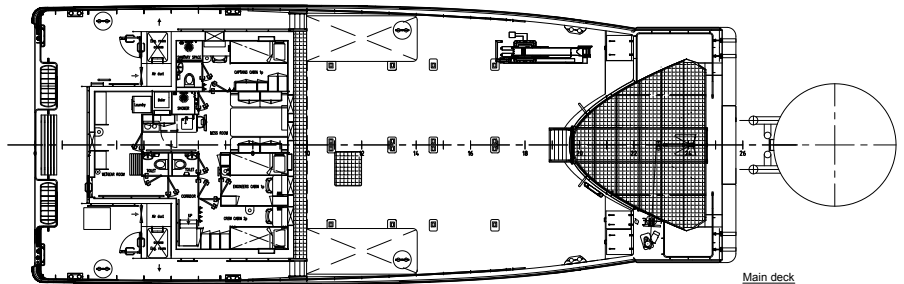
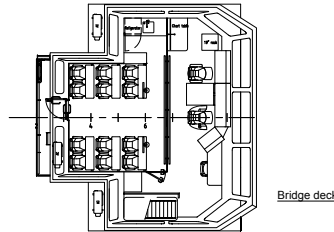
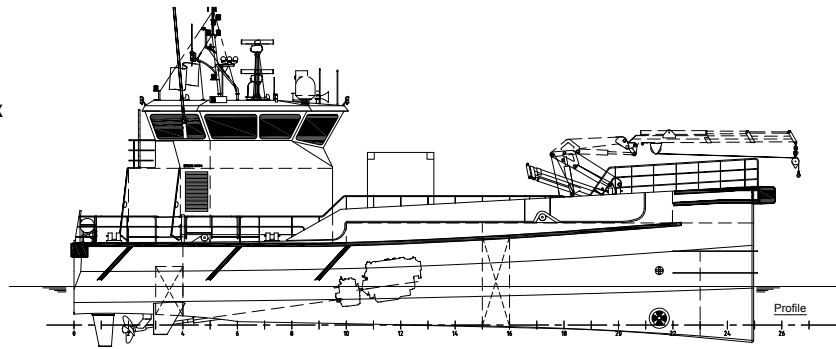
FUEL CONSUMPTION 2 X CATERPILLAR C32 TTA 1790 KW

Working schedule 12 pax vessel	Speed in kts	Consumption ltr/hour/12 pax
Maximum speed	25	425
Economic speed	12	127
Thrusting	0	113
Turbine transit	12	127
Standby/Idling	0	36
At anchor	0	5.2
Reduced speed 85%	22	385

All numbers are verified but without guarantee.

DECK LAY-OUT

<p>Anchors 1 x HPP pool, 150 kg</p> <p>Fender Polymarine flat fender</p> <p>Deck crane A hydraulically operated knuckle boom crane is mounted on the vessel in accordance with the General Arrangement Plan. The crane is provided with a remote control.</p> <p>SWL 2200 kg at 8.60 m.</p> <p>SWL based on harbour conditions 90.0 m²</p>	<p>Deck space 5.0 ton up to 15 ton</p> <p>Deck cargo forward Container fittings are integrated in the cargo deck</p> <p>Max. deck load 1.5 ton/ m²</p> <p>Moon pool A reinforced moon pool is a part of the cargo deck structure. The moon pool is closed with a removable hatch, nearly flush with the deck. Around the moon pool container fittings are provided to fit a survey above the moon pool.</p> <p>Clear opening 0.92 m x 1.20 m.</p>
Fuel transfer	A hose reel is provided for the fuel cargo system with a 40 m hose and pistolgrip.
High pressure cleaner	The work deck is provided with a fresh water connection for a high pressure cleaner. The cleaner itself is provided with a hose of 30 m and a lance.



ABOUT THE SHIP MANAGER



The management of SeaZip ships is carried out by the JR Shipping Group, located in Harlingen, The Netherlands, an experienced and renowned ship owning company. The shipping group operates a fleet of modern container feeders sailing under Dutch flag. JR Shipping cooperates closely with experienced maritime partners, several shipyards in the Netherlands and abroad, and renowned shipping bankers. JR Shipping is an efficient, flexible organisation, offering swift and effective solutions. We combine clout in ship development with well-secured quality and safety in ship management and an eye for sustainability.

www.jrshipping.com

SEAZIP
OFFSHORE SERVICE

MAKING
RENEWABLE
ENERGY
ACCESSIBLE

Korte Lijnbaan 25

P.O. Box 3, 8860 AA Harlingen

T + 31(0)517 431 225, F + 31(0)517 431 720

info@seazip.com, www.seazip.com