



## FAST CREW/CARGO CATAMARAN FCS 2610

MV SeaZip 6 is a highly flexible offshore service vessel designed to perform a wide range of offshore wind farm servicing tasks, like transport of Industrial Personnel & equipment.

### GENERAL

Hull	Aluminum catamaran
Superstructure	Aluminum
Basic functions	Crew / cargo duties
Classification	Bureau Veritas
GMDSS	A2
IMO no	9776119
Call sign	PBGR
Year built	2016
Builder	Damen Shipyards
Homeport	Harlingen
Flag	Dutch

### DIMENSIONS

Length o.a.	26.30 m
Beam o.a.	10.27 m
Depth at sides	2.90 m
Draught max.	2.20 m

### TANK CAPACITIES

Fuel oil	14.20 m <sup>3</sup>
Optional fuel oil	8.00 m <sup>3</sup> (trim tank)
Fresh water	2.00 m <sup>3</sup>
Waste water	0.50 m <sup>3</sup>
Bilge	0.33 m <sup>3</sup>

### PERFORMANCE (TRIALS)

Speed	25.0 kts
Max. range	Up to 1200 nm
Light ship weight	73 ton
GT	167
NT	50

### PROPULSION SYSTEM

Main engines	2 x Caterpillar C32 TTA, rating B
Total power	2 x 895 kW (2400 bhp) 1800 - 2000 rpm
Gearboxes	Reintjes ZWVS 440/1 (two speed)
Propellers	Fixed-pitch propellers
Bow thrusters	2 x 50 kW hydraulically driven

### ELECTRICAL EQUIPMENT

Network	24V DC, 400/230V 50Hz AC
Generator set	2 x Caterpillar C2.2
Capacity	22.5 kW / 28.0 kVA
Shore connection	32 A

### LIFE SAVING EQUIPMENT

Life buoys	2
Life jackets	16
Immersion suits	16
Personal MOB system	A GPS Plot self-managed Man Overboard Locating System is provided. The system contains a base unit and 14 alerting units. The alerting units will transmit on 121.5 MHz.
Liferafts	2 x 16 persons
Fire Fighting Equipment	Fixed Fire Extinguishing Installation
Fire Detection System	
Portable Extinguishers	
AED	

### ACCOMMODATION

Crew	4
Cabins	3
Transfer crew	24 (12 PAX + 12 Industrial Personnel or 24 Industrial Personnel)
Wheelhouse	2 motion damping seats, passenger lounge with 24 seats
Main deck	Crew cabins, pantry and toilet
Air conditioning ventilation facilities	In the wheelhouse, pax area and main deck



## NAUTICAL AND COMMUNICATION EQUIPMENT

Searchlight	1 x Pesch 1000W 230V
VHF's	1 x Sailor RT 6222 1 x Sailor RT 6210
Radar	2 x JRC JMA 5212-4 MK2
GPS	JRC JRL-20
Navtex	JRC NCR 333
AIS	JRC JHS 182
MF/HF	Sailor 5000
Immersat C	Sailor TT 3000E
Broadband Satellite System	Starlink Flat High Performance Antenna
Wi/Fi	
Ecdis	2 x Transas Navisailor 4000

## DECK LAY-OUT

Anchors	1 x HPP pool, 150 kg
Fender	Seasight or bouyant works - project specific.
Deck crane	A hydraulically operated knuckle boom crane is mounted on the vessel in accordance with the General Arrangement Plan. The crane is provided with a remote control. SWL 2200 kg at 8.60 m. SWL based on harbour conditions
Deck space	90.0 m <sup>2</sup>
Deck cargo forward	5.0 ton up to 15 ton. Container fittings are integrated in the cargo deck, 2,5 ton each
Max. deck load	1.5 ton/m <sup>2</sup>
Moon pool	A reinforced moon pool is a part of the cargo deck structure. The moon pool is closed with a removable hatch, nearly flush with the deck. Around the moon pool container fittings are provided to fit a survey above the moon pool. Clear opening 0.92 m x 1.20 m.
Fuel transfer	A hose reel is provided for the fuel cargo system with a 40 m hose and pistolgrip.
High pressure	The work deck is provided with cleaner a fresh water connection for a high pressure cleaner. The cleaner itself is provided with a hose of 30 m and a lance.

## ADDITIONAL VESSEL MOTION MONITORING SYSTEM

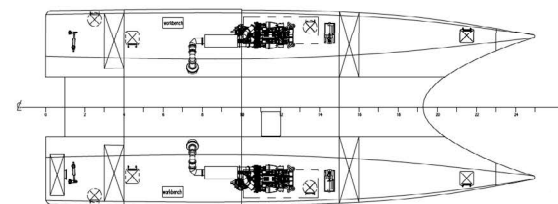
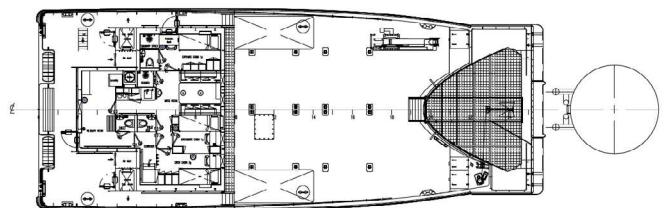
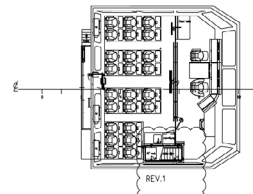
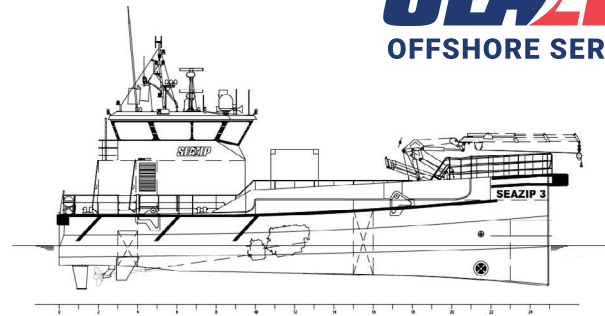
Optional

## SUSTAINABLE OPTION

Fuel HVO 100

Some of the items in this specification are optional. Specification and general arrangement can be changed without notice. All details are verified but without guarantee.

**SEAZIP**  
OFFSHORE SERVICE



## FUEL CONSUMPTION 2 X CATERPILLAR C32 TTA 1790 KW

Working schedule	Speed in kts	Consumption ltr/hour
24 pax vessel		
Maximum speed	25	425
Economic speed	12	127
Thrusting	0	113
Turbine transit	12	127
Standby/Idling	0	36
At anchor	0	5.2
Reduced speed 85%	22	385

## ABOUT THE SHIP MANAGER

The management of SeaZip vessels is carried out by the JR Shipping Group in Harlingen, The Netherlands, an experienced and all-round shipping company. The shipping group operates a fleet of modern container feeders sailing under Dutch flag and JR Shipping cooperates closely with experienced maritime partners, several shipyards in the Netherlands and abroad, and renowned shipping bankers.

JR Shipping Group is an efficient, flexible organisation, offering swift and effective solutions. We combine clout in ship development with well-secured quality and safety in ship management and an eye for sustainability. [www.jrshipping.com](http://www.jrshipping.com)



Korte Lijnbaan 25 - P.O. Box 3 - 8860 AA Harlingen  
The Netherlands - +31 (0)517 - 431 225 - [chartering@seazip.com](mailto:chartering@seazip.com)